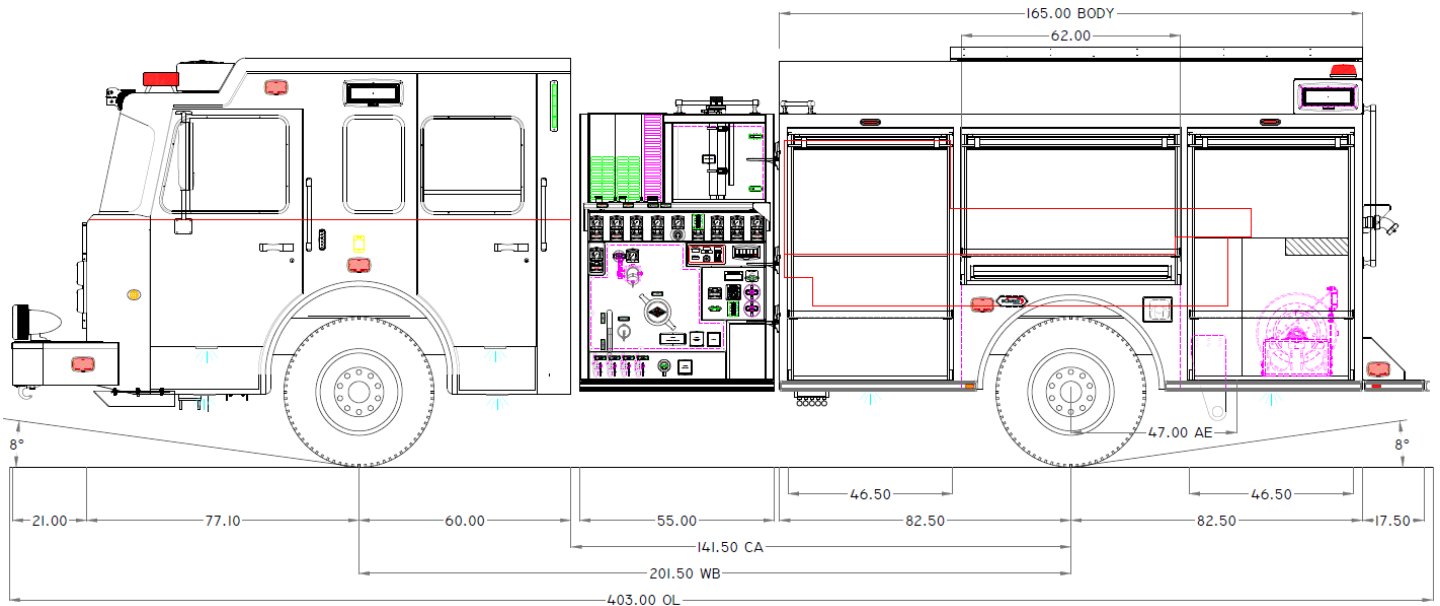


# K-180 CUSTOM PUMPER

## MODEL #4114



### CHASSIS

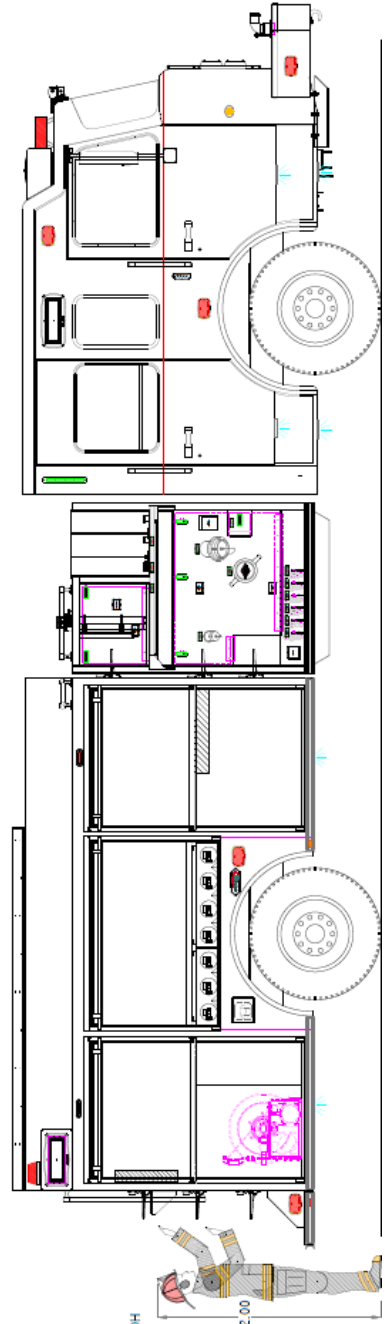
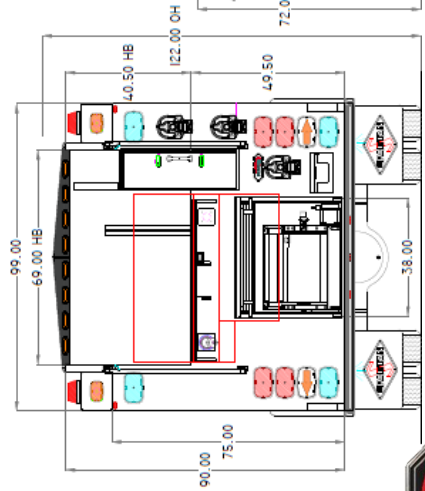
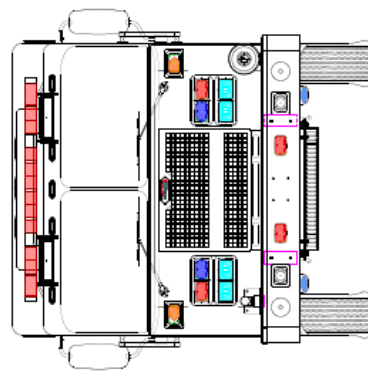
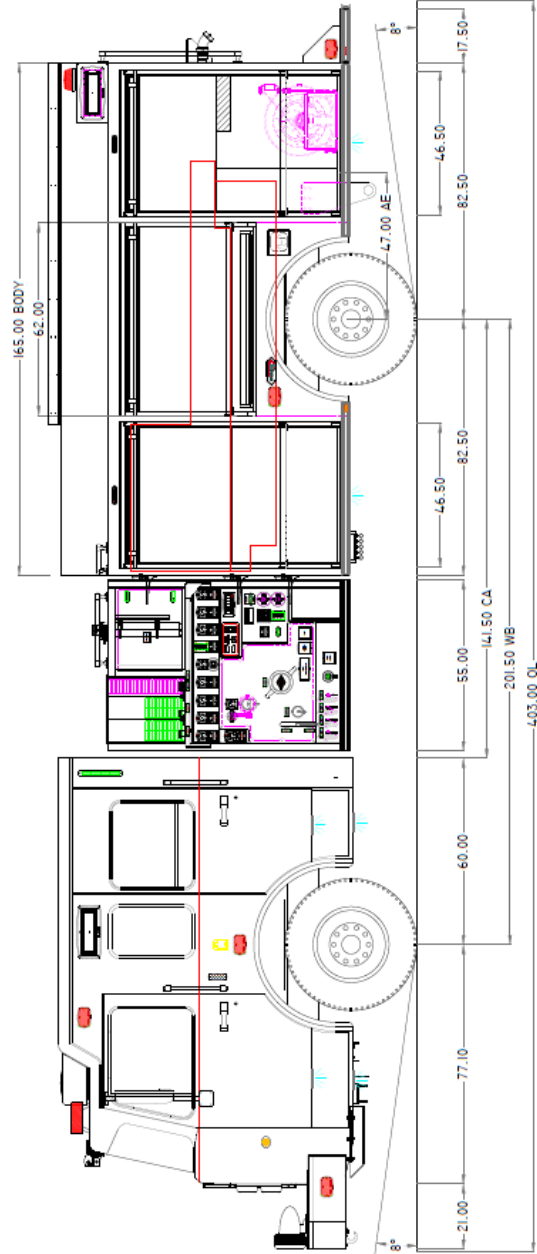
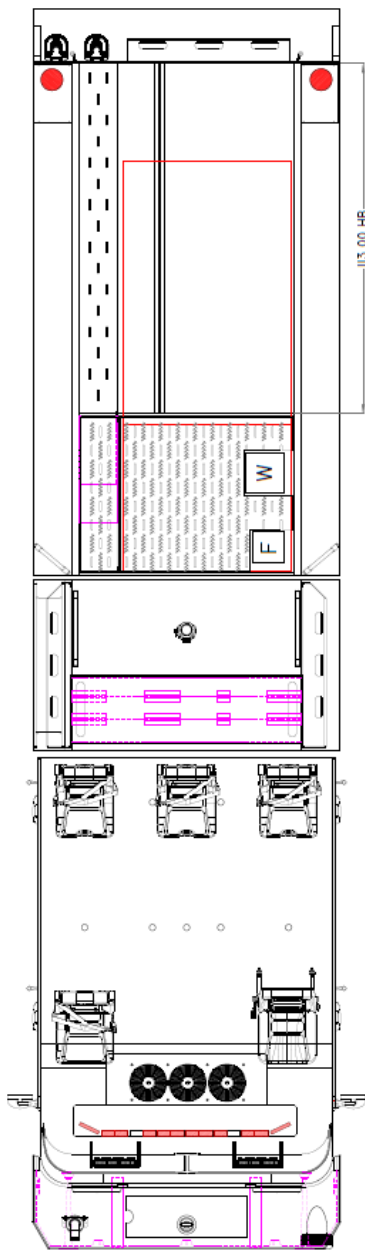
- KME Panther EMFD 10" Raised Roof
- Seating Capacity 6
- Cummins X10 450HP MHD or HHD Engine
- Extreme Duty Interior
- FRC OmniPlex 10" Touchscreen Controls
- 12.8" Touchscreen Instrument Cluster
- IMMI 4Front® & RollTek™ Occupant Protection
- Independent Front Suspension
- Axles: 21,500 Front, 27,000 Rear
- 21" Front Bumper Extension
- 201.5" Wheelbase
- Advanced Climate Control
- Rear View Backup Camera w/ Color Display
- Whelen Front & Side Scene Lighting
- 48° Cramp Angle
- Michelin Tires
- Severe Duty Front Bumper
- Dual Grover Brand Stutter Air Horns
- Federal Q2B Mechanical Siren

### PUMP & PLUMBING

- Waterous CSU 2000 GPM
- FRC InControl Pressure Governor
- 750 Gallons Water / 20 Gallons Foam
- 4" Master Discharge
- Booster Reel Foam Capable
- Pre-Connects:
  - (2) 1-3/4" Crosslays Foam Capable
  - (1) 2-1/2" Crosslay
  - (1) 1-1/2" Front Trashline Foam Capable
- FoamPro 1600 Foam System
- TFT Extenda-Gun on Deluge Riser
- Poly Water Tank

### BODY

- Tri-Max™ High Strength Aluminum Body
- Vibra-Torque Body Mounting System
- ROM Series IV Roll-up Doors
- Dual Full-Height LED Compartment Lights
- Door Protection Shields
- SCBA Bottle Storage for (7)
- Durable Compartment Finish
- OnScene LED Compartment Lighting
- Whelen LED Lighting Package
- Booster Reel
- Treadplate Hose Bed Covers w/Integral Rear Directional Light
- Ladder Storage for 24', 14', 10' Attic Ladder, Backboard, Two std Pike Poles, and D-Handle Trash Hook (Optional 28' in place of 24')
- Wheel Well Roll-out Drawer
- Intermediate Rear Step w/ Handhold
- Whelen Pioneer Side Scene Lighting



ENGINEERED TO SERVE

[kmeffire.com/k-180-rapid-delivery/](http://kmeffire.com/k-180-rapid-delivery/)